

BIOLOGICAL SAFETY CABINET PURICUBE NEO



Class II type A2 biological safety cabinet that protects the user and lab environment from the biohazard factor and prevents cross contamination of various samples used in experiments

STANDARD SPECIFICATION



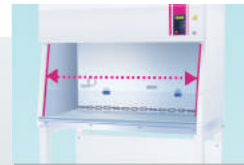
Model		PURICUBE NEO 900	PURICUBE NEO 1200	PURICUBE NEO 1500	PURICUBE NEO 1800
Size	Inner(W x D x H)mm	900x576x649	1200x576x679	1500x576x679	1800x576x663
	Out(W x D x H)mm	970x783x2100	1270x783x2100	1570x783x2100	1870x783x2100
	Weight(Kg)	190	225	250	280
	Base Stand(mm)	Stand 716 (Included Caster 82)			
Type		Class II A2 (70% recirculation as downflow & 30% exhaust as outflow)			
Controller	Display	LCD display			
	Function	FL lamp On/Off, UV lamp On/Off, UV lamp timer, Total using / Filter using time			
Sash		Weight balanced sliding tempered safety glass(5mm thick)			
Worktop Material		Stainless steel plate 304, HL			
Inside Material		Stainless steel plate 304, HL			
Outside Material		Epoxy powder coated steel plate			
Filter		H-14 HEPA filter : 99.995% at 0.3µm / ISO class 5			
Average Airflow Velocity	Inflow	0.40 m/s	0.40 m/s	0.40 m/s	0.40 m/s
	Downflow	0.30 m/s	0.30 m/s	0.35 m/s	0.35 m/s
Gas Valve		1EA			
Air Valve (VACCUM)		1EA			
Consent		2EA with reinforced cover(mounted on inside wall)			
UV Lamp		20W x 1EA	30W x 1EA	40W x 1EA	
FL Lamp		55W x 1EA	36W x 2EA	55W x 2EA	
Noise (dB)		< 70dB			
Power		230V±10%, 50/60Hz,EU Standard Plug			
Safety		UV lamp automatic switch-off when door's opened, Fuse installed each electric part, Filter life span alarm with buzzer and display on screen			

MAIN FEATURE



Ergonomic design to give the increased convenience

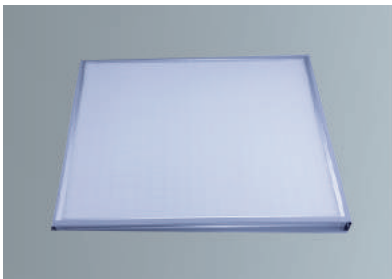
- With a 10 degrees sloped design, it is possible to reduce tension in the arms, neck, and shoulders during the experiment.
- Thanks to higher door glass, extensive visibility can be achieved. Since there is no frame at the bottom of the door glass, the visibility is not disturbed during experiment.
- Due to the armrest, it is convenient to perform more than a certain amount of time, and the elbow can be fixed in the event of precise operation.



① $\angle 10^\circ$ Angle in front



② Frame-less window



Strengthen validation support using higher performance filters

- HEPA filter that enables to remove 99.995% of particles that have a size greater than or equal to $0.3\mu\text{m}$
- Optional ULPA filter that enables to remove 99.9995% of particles that have a size greater than or equal to $0.12\mu\text{m}$



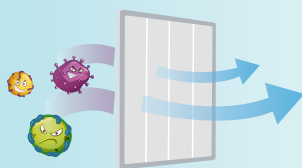
Equipment that enables safe UV sterilizer

- UV sterilization will effect micro organisms at the surface of work table.
- While UV light is on, front reinforced glass door protects the user by blocking UV rays.
- Automatically turns off UV light when opening the door or turning on the fluorescent lamp.



Checking the life and performance of filters through a differential pressure gauge

Measure the pressure of the bottom HEPA filter to check the performance and lifespan of the filter in real time, allowing more safe and effective testing.



Suitable for laboratories requiring higher levels of safety grade 2

- Intake air and working chamber air are drawn to the under plenum of the worktop bench ensuring user safety in assured.
- 70% recirculated air is filtered with the HEPA filter, ensuring product safety is assured.
- 30% exhausting air is emitted through the HEPA filter, which complies with the environmental safety requirements of the laboratory.



Strengthen sample and user safety

- Protect specimen and user's safety by inflow and downflow control.
- Internal air pressure is maintained with negative pressure compared to the outside, preventing the contaminated air from escaping through the gaps.



Design to help optimize the layout of space in the laboratory

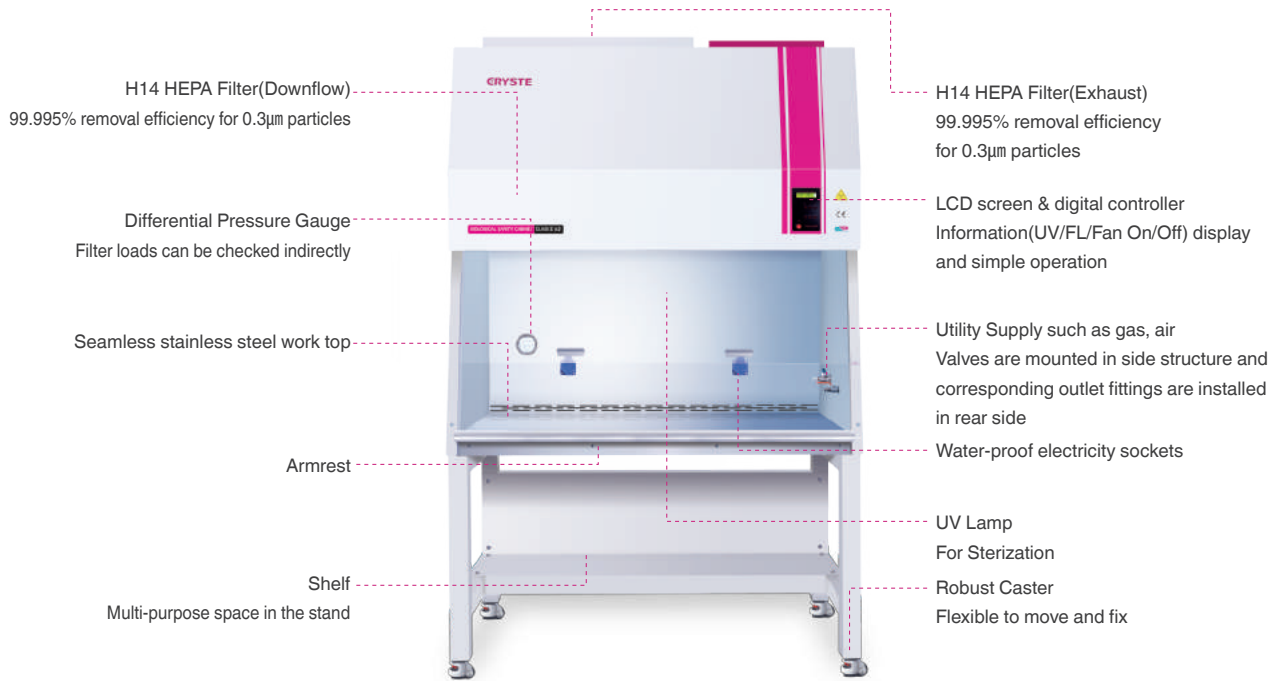
The gas/air utility line installed on the laboratory wall is connected via a one-touch fitting on the back of the cabinet. There are no obstacles to installation on either side of the equipment.



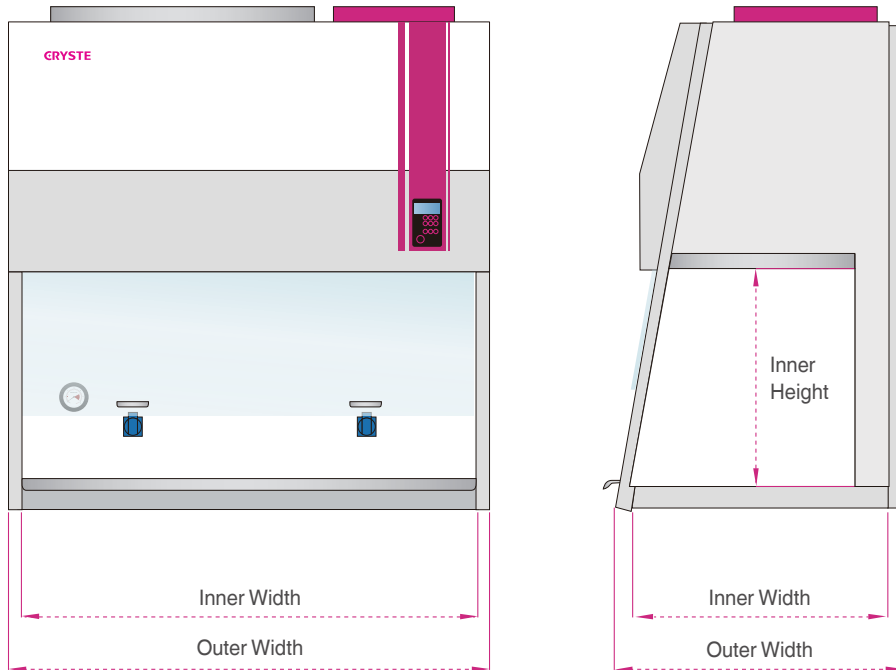
High performance motor to maintain the set airflow velocity

Regardless of filter loads, airflow velocity can be maintained at the set value through the high performance motor.

PART DESCRIPTION



DIMENSIONAL INFORMATION



ORDER INFORMATION

DIVISION	ITEM	ORDER CODE			
		PURICUBE NEO 900	PURICUBE NEO 1200	PURICUBE NEO 1500	PURICUBE NEO 1800
PRODUCT	Main Body	PCBN-9-MB	PCBN-12-MB	PCBN-15-MB	PCBN-18-MB
OPTION	Change to ULPA filter	PCBN 012 0010	PCBN 022 0010	PCBN 032 0010	PCBN 042 0010
	Add. Gas Valve	PCBN 001 0011			
	Add. Air Valve	PCBN 001 0012			
	• Add. Consent(220V)	PCBN 001 0013			
	• Add. Consent(110V)	PCBN 001 0014			
	Exclude Bottom Stand	PCBN 011 0015	PCBN 021 0015	PCBN 031 0015	PCBN 041 0015
	Wooden Packing	PKG OW AA	PKG OW AB	PKG OW AC	PKG OW AD

- These options must be ordered before confirmation of order because it's not possible to modify later

